



PCT

WORLD INTELLECTUAL PROPERTY ORGANIZATION
International Bureau

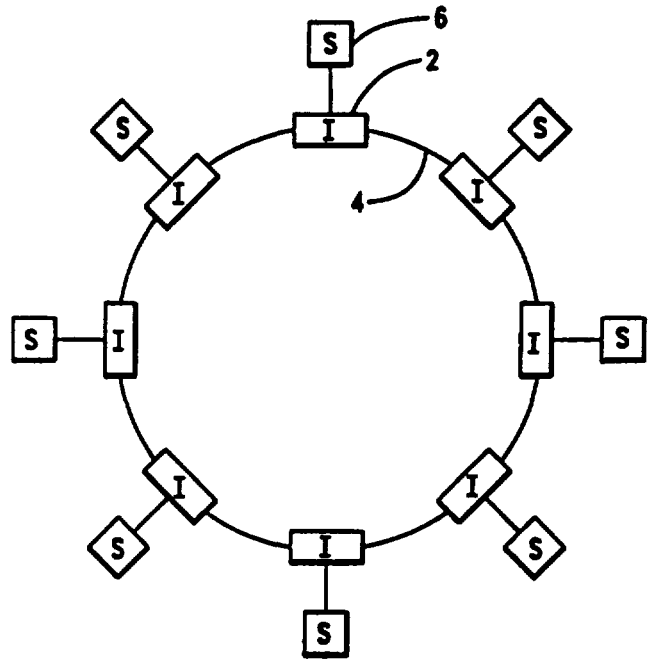
INTERNATIONAL APPLICATION PUBLISHED UNDER THE PATENT COOPERATION TREATY (PCT)

<p>(51) International Patent Classification ⁶ : H04L 5/22</p>	<p>A1</p>	<p>(11) International Publication Number: WO 96/22642 (43) International Publication Date: 25 July 1996 (25.07.96)</p>
<p>(21) International Application Number: PCT/US96/00207 (22) International Filing Date: 5 January 1996 (05.01.96) (30) Priority Data: 08/374,148 17 January 1995 (17.01.95) US (71) Applicant: ZETA MUSIC PARTNERS [US/US]; 2230 Livingston Street, Oakland, CA 94606 (US). (72) Inventors: McMILLEN, Keith, A.; 1406 Scenic Drive, Berkeley, CA 94708 (US). SIMON, David; 4017 Villa Vera, Palo Alto, CA 94306 (US). WRIGHT, Matthew; Apartment A, 1920 Haste Street, Berkeley, CA 94704 (US). (74) Agents: LaBRIE, Michael, J. et al.; Dougherty, Hessin, Beavers & Gilbert, Suite 1400, Two Leadership Square, 211 North Robinson, Oklahoma City, OK 73102 (US).</p>		<p>(81) Designated States: DE, JP. Published <i>With international search report.</i></p>

(54) Title: COMMUNICATIONS NETWORK INTERFACE, AND ADAPTER AND METHOD THEREFOR

(57) Abstract

An interface (2) for a peer-to-peer communications network, such as a token ring network (4), uses a master-slave communications controller and an adapter to enable the interface (2) to operate in a peer-to-peer mode on the network.



FOR THE PURPOSES OF INFORMATION ONLY

Codes used to identify States party to the PCT on the front pages of pamphlets publishing international applications under the PCT.

AM	Armenia	GB	United Kingdom	MW	Malawi
AT	Austria	GE	Georgia	MX	Mexico
AU	Australia	GN	Guinea	NE	Niger
BB	Barbados	GR	Greece	NL	Netherlands
BE	Belgium	HU	Hungary	NO	Norway
BF	Burkina Faso	IE	Ireland	NZ	New Zealand
BG	Bulgaria	IT	Italy	PL	Poland
BJ	Benin	JP	Japan	PT	Portugal
BR	Brazil	KE	Kenya	RO	Romania
BY	Belarus	KG	Kyrgystan	RU	Russian Federation
CA	Canada	KP	Democratic People's Republic of Korea	SD	Sudan
CF	Central African Republic	KR	Republic of Korea	SE	Sweden
CG	Congo	KZ	Kazakhstan	SG	Singapore
CH	Switzerland	LI	Liechtenstein	SI	Slovenia
CI	Côte d'Ivoire	LK	Sri Lanka	SK	Slovakia
CM	Cameroon	LR	Liberia	SN	Senegal
CN	China	LT	Lithuania	SZ	Swaziland
CS	Czechoslovakia	LU	Luxembourg	TD	Chad
CZ	Czech Republic	LV	Latvia	TG	Togo
DE	Germany	MC	Monaco	TJ	Tajikistan
DK	Denmark	MD	Republic of Moldova	TT	Trinidad and Tobago
EE	Estonia	MG	Madagascar	UA	Ukraine
ES	Spain	ML	Mali	UG	Uganda
FI	Finland	MN	Mongolia	US	United States of America
FR	France	MR	Mauritania	UZ	Uzbekistan
GA	Gabon			VN	Viet Nam

**COMMUNICATIONS NETWORK INTERFACE,
AND ADAPTER AND METHOD THEREFOR**

Background of the Invention

5 This invention relates generally to interfacing a station with a communications network. In a particular aspect of the preferred embodiment of the invention, a device operating in a master-slave mode of operation is adapted to a token ring network operating in a peer-to-peer mode.

10 An example of a communications network with which the present invention can be used is one which connects one or more musical instruments, computers and synthesizers so that the connected equipment can be used to create and play synthesized music. A specific
15 implementation of such a network is a local area network that uses the token passing access method, whereby the network can be referred to as a token ring network.

A token is typically a series of bits in a predetermined unique format. In a token ring network,
20 the token passes sequentially from station to station until a station seizes the token and transmits its own data. Other stations on the network "listen" to the transmitted data, utilize it if it is addressed to them, and pass the data on. When the transmission concludes,
25 the seizing station relinquishes the token by transmitting the token format back onto the network. In such a network, data flows circularly from the current token-holder around the ring.

To enable network transmissions to be recognized,
30 they need to conform to some standard. A well-known standard is the Synchronous Data Link Control (SDLC) protocol. SDLC is a bit-oriented synchronous protocol.

A device that works with this protocol is the Zilog
8530 serial communications controller. One of these
35 devices can operate in an SDLC loop mode to interface a

-2-

station to a network having a ring topology. The 8530 serial communications controller in SDLC loop mode is designed for use as part of a master-slave network, in which each message is either from the ring master to a slave or from a slave to the ring master. In this configuration, while a slave sends a message to a master, the master sends back all logic ones ("1") to the slave.

This master-slave arrangement, however, is not desirable for some applications. With regard to the music synthesis network mentioned above, peer-to-peer communications, wherein any station on the network can communicate directly with any other station without going through a master station, is preferred because of, for example, the greater flexibility of communication due to the direct station-to-station communication. In peer-to-peer communications, while one device is sending data, there is not another device on the ring sending it all ones. Instead, the data sent by that device goes all the way around the ring and back to the sender. Thus, the 8530 chip operating in SDLC loop mode has not been useful in peer-to-peer communications because it would not receive the expected stream of ones during transmission. Instead it would receive its transmitted data back so that it would likely transmit an improper format at the conclusion of its transmission.

One way to implement a peer-to-peer token ring network is to use an IBM Token Ring chip; however, this device is relatively expensive (e.g., about \$35-\$80) compared to the 8530 serial communications controller (e.g., about \$3). Thus, it would be desirable to be able to connect a station to a peer-to-peer token ring network through an interface using the less expensive, but heretofore inapplicable master-slave device. This is accomplished by the present invention.

-3-

Summary of the Invention

The present invention overcomes the above-noted and other shortcomings of the prior art by providing a novel and improved communications network interface and adapter and method therefor. In its preferred embodiment, the present invention enables a peer-to-peer token ring network to be implemented using a relatively inexpensive master-slave serial communications controller (such as the aforementioned approximately \$3 8530 device) to connect a station at any node of the network. To accomplish this, an adapter transmits all logic ones to the serial communications controller when the controller is transmitting to the network. This satisfies the master-slave criterion of the serial communications controller while the adapter maintains peer-to-peer communication with the network. When the serial communications controller reaches the end of its transmission frame, it does the usual thing under master-slave operation: it sends a flag, then reconnects its input to its output. This produces a flag followed by ones, which is the predetermined unique token format desired. The adapter transfers this data to the network and looks for its return. Until it detects the flag from the network, it continues transmitting ones to the serial communications controller. Once the adapter detects the flag, it reconnects the controller to receive the signals from the network.

Accordingly, the present invention provides a communications network interface adapter, comprising means, adapted to be connected to a communications network and to a serial communications controller at a node of the communications network, for transferring network data to the serial communications controller during a receive mode of operation. The adapter further comprises means, adapted to be connected to the communications network and to the serial communications controller at the node of the communications network, for

-4-

sending predetermined signals instead of network data to the serial communications controller during a transmit mode of operation.

5 The present invention also provides an interface for a token ring network. The interface comprises a serial communications controller having a master-slave mode of operation. The interface also comprises the
10 aforementioned adapter preferably embodied in a programmable logic device connected to the serial communications controller. This device is programmed to adapt the serial communications controller to operate on a peer-to-peer token ring network when the serial communications controller operates in the master-slave mode. The programmable logic device has a receive mode
15 of operation. In this mode a signal received by the programmable logic device from a connected token ring network is transferred to the serial communications controller, and a signal received by the programmable logic device from the serial communications controller is transmitted onto the connected network. The programmable
20 logic device also has a transmit mode of operation. In this mode a predetermined signal is sent to the serial communications controller from the programmable logic device in place of a signal received by the programmable logic device from the connected network, and a signal received by the programmable logic device from the serial communications controller is transmitted onto the
25 connected network.

The present invention still further provides a
30 method of communicating a station in a peer-to-peer mode on a token ring network. The method comprises: (a) receiving a signal from a token ring network; (b) transferring the received signal to a serial communications controller operating in a master-slave
35 mode; (c) receiving a responsive signal from the serial communications controller; (d) transmitting the responsive signal onto the token ring network; and

-5-

repeating steps (a) through (d) until a predetermined token defined by a plurality of signals on the network is seized by the serial communications controller. When this occurs the following steps are performed until the token is passed on by the serial communications controller: receiving a signal from the token ring network; sending a predetermined signal to the serial communications controller to emulate to the serial communications controller master-slave operation during transmission by the serial communication controller; receiving a signal from the serial communications controller; and transmitting the signal received from the serial communications controller onto the token ring network.

Therefore, from the foregoing, it is a general object of the present invention to provide a novel and improved communications network interface and adapter and method therefor. Other and further objects, features and advantages of the present invention will be readily apparent to those skilled in the art when the following description of the preferred embodiment is read in conjunction with the accompanying drawings.

Brief Description of the Drawings

FIG. 1 is a schematic and block drawing representing a token ring network in which the interface, adapter and method of the present invention can be used.

FIG. 2 is a schematic and block drawing representing a star configured token ring network.

FIG. 3 depicts an end coupling of, and signals communicated over, a cable used to link interfaces of the network.

FIG. 4 depicts an end coupling of another type of cable used to link interfaces of the network.

FIG. 5 is a schematic circuit diagram of the preferred embodiment interface, including the adapter, of the present invention.

-6-

FIG. 6 is a flow chart of a program for the adapter of the interface of the present invention.

Detailed Description of Preferred Embodiment

The present invention will be described with reference to a token ring network, a basic form of which is illustrated in FIG. 1. The network includes two or more interfaces 2 connected together by point-to-point lines implemented such as by known cables 4 that comply with an applicable standard (e.g., IEEE 802.5). Each interface 2 connects a respective station 6 into the network. A station 6 includes particular equipment which is to utilize or generate the information communicated over the network. An example of such equipment is a musical instrument, synthesizer or computer in a music synthesis local area network that uses the ring topology and the token passing access technique.

Although the present invention is not limited to a specific communications protocol, the preferred embodiment of the invention has been developed for use in a token ring network operating under a new standard known as the Zeta Instrumental Processor Interface developed by Zeta Music Partners, a partnership between Zeta Music Systems, Inc. and Gibson Ventures, Inc. A brief explanation of this will be given before further describing the present invention.

Zeta Instrumental Processor Interface

The network specification for this standard defines a collection of protocols that allow musical instruments, synthesizers, mixer boards, lighting controls, and other similar devices to communicate with one another.

The protocols constitute a stack that conforms to the OSI model. "OSI" stands for "Open Systems Interconnection." OSI was developed by the International Standards Organization as a model for how to divide computer networks into various conceptual layers. The physical and data link layers have been fully defined for

-7-

the Zeta Instrumental Processor Interface. In addition a network-layer naming service has been specified and various application-layer protocols have been defined. Routing, transport, session, and presentation protocols are not specified, as there is no immediate need for them, but hooks have been left to allow the inclusion of such protocols.

As of 1994 the following are some features of the Zeta system:

- 10 • peer-to-peer architecture -- Any device can send messages directly to any other device on the ring, or to all devices at once. Up to 253 devices can be on the ring.
- 15 • low per-node cost -- The hardware for an interface used to connect to the network at a node is relatively inexpensive (e.g., less than \$5) because the nodal interface can be implemented by the present invention.
- 20 • compatibility -- The Zeta system works with other protocols. Specific provision has been made to carry MIDI data over the data-link protocol used in the Zeta system. Hooks have been left to run other protocols as the market requires. (It also uses SDLC conventions.)
- 25 • open architecture -- Zeta Music Partners has published the draft specifications for the protocols and will continue to publish revised specifications.
- 30 • efficiency -- The protocols allow the most common information to be passed in very small frames. The token passing network scheme uses most of the network bandwidth for transmitting data.
- 35 • determinism -- The token passing ring guarantees that each node will get a chance to send data whenever the token comes around the ring. Once a device has the token, the data

-8-

that it transmits will arrive before a certain time since no other device has permission to talk while another holds the token.

- 5 . fault tolerance -- The network does not fail if one of the nodes fail as a failed node is automatically bypassed.
- . OSI -- The protocols conform to the OSI model, allowing functionality with other networks such as Ethernet or FDDI.
- 10 . speed -- The network operates at speeds from 250 KHz and up (presently available hardware will support up to 20 MHz). Data rate is variable depending on the capability and need of all the devices on the network. Initial
- 15 turn-on baud rate is 250K baud, but the software has a protocol for bringing the baud rate up to any speed that all devices can handle.
- . small processor load -- each host processor is
- 20 interrupted only when it receives a message addressed to it. Only the network monitor device must see every message.
- . minimal cabling required -- each node needs only one cable to connect it to the network.

25 The protocols are divided into layers according to the OSI model. The following sections summarize network operations at the various layers.

physical layer

30 Logically, the nodes are connected in a ring, in which each device passes data to the next one around the ring. Physically, the devices are connected in a star-shaped configuration in which each device is connected to an active "hub" at the center of the star. The network is laid out as a star-shaped token passing ring such as

35 illustrated in FIG. 2, wherein a network of four nodes is depicted (a network can have a minimum of two nodes). At the center of the star is an active hub 8 (or a group of

-9-

hubs) that has two functions: it connects the devices on the ring to one another and it monitors the general health of the network. The hub 8 is a conventional apparatus and is connected to the interface 2 of each node by a respective cable 4 as well-known in the art. The hub 8 maintains the logic of a ring by sending the data coming from each device out to the next device in the star. The hub 8 can include bypass switches (not shown) which close to bypass a node that is not functioning, thereby maintaining the closed loop communication path of the ring.

Each interface 2 is connected to the hub 8 by a seven-wire cable 4 with two directions of data flowing through it. Each direction has clock, data, and current lines; the seventh wire is for shielding the entire cable. It would be possible to encode the clock onto the data line, eliminating the need for the clock wire and associated opto-isolator (in the interface 2). The receiving device could use a digital phase locked loop for clock recovery. However this would limit maximum data rates to approximately 1M and reduce communications reliability so the separate clock lines are preferred. Each cable end is terminated with a 7-pin DIN plug schematically illustrated in FIG. 3.

A respective cable can alternatively be terminated with an eight-pin mini-DIN connector 12 (FIG. 4), to allow the respective interface 2 to be built into laptop computers. In this case the signal designations for the pin out configuration of FIG. 4 are as follows:

30	pin 1	clock out
	pin 2	clock in
	pin 3	current out
	pin 4	shield
	pin 5	current in
35	pin 6	data out
	pin 7	no connection
	pin 8	data in

-10-

By having one cable 4 carry information in two directions, each interface 2 needs only one female seven-pin DIN connector. The hub 8 has multiple female seven-pin DIN connectors, all equivalent. An interface 2 can then be attached to a hub 8 using a male-to-male seven-pin DIN cable 4. Multiple hubs 8 can be attached to one another in the same way.

The hub 8 preferably has two light-emitting diodes (LEDs) per plug, with the following respective meanings:

- an interface is connected and sending a clock.
- the connected interface is sending data.

The network preferably uses an opto-isolated current loop.

Up to 253 nodes can be connected on a single ring.

In addition to providing connectivity, the hub 8 implements a monitoring function to keep the network running smoothly. There is no technical reason why the monitor device has to be the same as the hub 8, but by making the hub 8 the monitor in the preferred embodiment of the Zeta system, non-monitor-capable devices can be used at the nodes. The practical implication of this preferred implementation is that two non-monitor-capable devices cannot be directly connected (of course, if there are three or more devices, a hub is required anyway just for connectivity.)

The monitor device provides the protocol for picking a clock speed for all ring communications; devices on the ring can negotiate the speed of the clock. The monitor must resynchronize the data to deal with a situation wherein the clock the monitor uses to send data is not in phase with the clock it uses to receive data. Furthermore, the monitor ensures that the token is circulating and that no garbage circulates on the ring; if the token is lost, the monitor must detect this and put a new token on the ring. Another monitoring function is the implementation of a sixteen-bit delay in the ring.

-11-

5 It is possible to have multiple monitor-capable devices; the software protocols elect a single monitor from among the qualified devices. It is also possible to have passive hubs that provide connectivity with no monitor capabilities.

10 When a ring of devices is formed, an automatic start-up sequence begins. First, the ring monitor is elected. The clock rate is determined, and all the other overhead of the network is taken care of automatically within a second of connecting the ring.

data link layer

The data link layer of the Zeta system provides the following services in addition to sending and receiving frames:

- 15
- It ensures that data has been received correctly by checking the Cyclical Redundancy Checking (CRC) data included with each frame and discarding frames on which the CRC is bad.
 - It sends acknowledgements of received frames

20

 - (at the option of the senders).
 - It establishes an address for its device that is unique among devices on the network.
 - It negotiates with the other devices on the network to determine the clock speed at which

25

 - the network runs.

The data link layer in the device monitoring the ring also ensures that there is a token on the ring and that no garbage is on the ring, and it notifies other devices when the clock speed is changing.

30 application layer

There can be several application layer protocols in the Zeta system. They include:

- Music Parameter Description Language (a language for describing music)

35

- MIDI

-12-

- unrestricted binary data, such as sample dumps, memory dumps, inter-computer communication, etc.
- mixer automation, lighting, and effects control
- 5 • machine control/synchronization
- virtual reality

other layers

There is also a network-layer naming protocol to allow devices on the network to find one another either
10 by name or by any of a large and expandable list of characteristics. For example, the naming protocol allows a device to search the network for "synthesizers capable of playing at least twelve notes and that can accept data at 1.0 Mb per second."

15 Hooks have been left for other protocol layers.

Although the present invention can be used in the foregoing Zeta system, the invention itself pertains only to the interface 2 which will now be described in detail.

Interface 2

20 Referring to FIG. 5, the interface 2 of the present invention comprises a serial communications controller 14 having a master-slave mode of operation. The interface 2 of the present invention also comprises an adapter 16 which adapts the master-slave serial communications
25 controller 14 to the peer-to-peer token ring network described above. In a particular implementation, the interface 2 further comprises an isolating input coupling device 18.

serial communications controller 14

30 The preferred implementation of the interface 2 is based on the 8530, an inexpensive serial communications controller chip available from Zilog and Advanced Micro Devices, or on one of its close relatives (the 85230 is shown in FIG. 5 and is preferred, but "8530" will be used
35 herein to generally refer to this family of particular

-13-

devices). The 8530 running in "SDLC loop mode" implements most of the physical layer of the previously described Zeta system as well as some of its data link layer protocol. The 8530 automatically handles most of the SDLC protocol: device addressing, host processor interrupts only for matched addresses, data framing, CRC error checking, and hardware arbitration of who gets to talk when. It provides automatic flag sending and zero insertion. It has a four byte first-in, first-out buffer and supports DMA (direct memory access). Data is sent packaged in SDLC frames. The SDLC frames have the following format:

2 or more flags (binary 01111110), followed by data (characterized by never having more than five consecutive 1's), followed by a closing flag (binary 01111110)

A frame may be preceded by any number of 1's, and a frame may be aborted at any time by sending the abort or end-of-poll (EOP) character (binary 01111111, wherein the "0" is the leading bit in the serial stream; it is this bit pattern that is the "token" in the particular implementation described herein).

More particularly, in conventional SDLC loop mode the 8530 listens to the messages being sent around the network, uses them if it is addressed, and passes these messages to the rest of the loop by retransmitting them with a one-bit time delay.

When an 8530 has a message to transmit and recognizes an EOP character on the line, it changes the last binary 1 of the EOP to a 0 before transmission. This has the effect of turning the EOP into a flag sequence. The 8530 then outputs its message. The message terminates with a flag and an EOP.

The 8530 can be adapted for the particular Zeta system described above by software which, although not forming part of the present invention:

-14-

- provides an interrupt routine for the 8530 that pushes the necessary registers, calls the routine provided by Zeta, and resets any interrupt control hardware other than that in the 8530; and
- sets up a timer, handles the timer interrupt, pushes the registers, and calls other provided routines.

adapter 16

10 Broadly, the adapter 16 for the communications network interface 2 of the present invention comprises means, adapted to be connected to the communications network and to the serial communications controller 14 at a node of the communications network, for transferring network data to the serial communications controller during a receive mode of operation. The adapter 16 further broadly comprises means, adapted to be connected to the communications network and to the serial communications controller 14 at the node of the communications network, for sending predetermined signals instead of network data to the serial communications controller 14 during a transmit mode of operation. These means are implemented in the preferred embodiment of the present invention by a programmable logic device programmed in accordance with the explanation of the invention contained in this specification (a specific program is listed at the end of this specification).

20 The programmable logic device is connected to the serial communications controller 14 to adapt it to operate on the peer-to-peer token ring network when the serial communications controller 14 operates in the aforementioned master-slave mode. The programmable logic device has a receive mode of operation wherein a signal received by the programmable logic device from a connected token ring network is transferred to the serial communications controller 14 and further wherein a signal received by the programmable logic device from the serial

-15-

communications controller 14 is transmitted onto the connected network. The programmable logic device also has a transmit mode of operation. In this mode a predetermined signal is sent to the serial communications controller 14 from the programmable logic device in place of a signal received by the programmable logic device from the connected network, and a signal received by the programmable logic device from the serial communications controller 14 is transferred onto the connected network.

The programmable logic device is implemented in the preferred embodiment by a model 22V10 device (such as the model 22V10 Programmable Array Logic (PAL) device from Advanced Micro Devices) as identified in FIG. 5 by the adapter reference numeral 16. The PAL 16 does two things required for a token ring that the 8530 serial communications controller 14 does not do:

- it removes from the ring any frames transmitted by the 8530, and
- it re-inserts the token on the ring, if necessary, after a frame transmitted from the 8530 has been removed from the ring.

The PAL 16 has the following inputs shown in FIG. 5:

RXD -- data signal received from the network
/RXC -- clock signal received from the network
(also connected to the /RTXC pin of the 8530)

FRMSET -- signal from the 8530 to indicate whether it is transmitting a frame; it is provided via the /RTS pin on the 8530

TXD -- data signal received from the TXD pin of the 8530 for transfer to the network

TXC -- clock signal received from the /TRXC pin of the 8530 for transfer to the network

/RESET -- reset signal from the /DTR-/REQ pin of the 8530.

The RXD and /RXC signals are generated by the 8530 of another station on the ring. They are therefore

-16-

synchronized. FRMSET is asynchronous and may occur at any time.

The PAL 16 has the following outputs:

5 RX8530 -- data signal transferred to the 8530
via the connected RXD pin of the 8530
S0, S1 -- status and testing signals from the
PAL to the /CTS and /DCD pins,
respectively, of the 8530
10 DATA OUT -- data signal transferred to the
network
CLOCK OUT -- clock signal transferred to the
network

input isolation device 18

15 The PAL outputs provided to the network are
connected directly via the cable 4; however, the PAL
inputs received from the network preferably are isolated
through a suitable line isolator. In the preferred
embodiment shown in FIG. 5, the isolator is an opto-
coupler such as a fast dual opto-isolator (e.g., the TI
20 HCPL2630 labeled "18" in FIG. 5) which isolates the
internal RXD and /RXC lines from the network DATA IN and
CLOCK IN lines. The opto-coupler 18 has respective
inputs for connecting to the network data input line and
the network clock input line. It also has an output
25 connected to the respective clock inputs of the serial
communications controller 14 and the adapter 16 for
communicating the network clock signal thereto, and it
has an output connected to the data input of the adapter
16 for communicating the network data signal thereto.

30 The foregoing describes implementations of
components of the preferred embodiment interface 2 and
their interconnections with each other and the
communications network. The interface 2 also connects to
a respective station 4 as illustrated in FIGS. 1 and 2.
35 This connection is made in a known manner whereby the
station is connected to other respective pins of the
particular 8530 device that is used. These pins are not

-17-

5 shown as they are known from published literature on the particular device used (see also page 79 of *Computer Music Journal*, Vol. 18, No. 4 (Winter 1994) and, more generally, pages 47-96 thereof, incorporated herein by reference).

With the structure of the interface 2 having been described, its operation and the method of the present invention as implemented by the circuit of FIG. 5 will next be described.

10 operation

The network data line starts at "mark" idle state (logical one). In the pass-through start up state of the PAL, the received input on RXD (PAL) is output on RX8530 for transferring (or "echoing") received network signals to the 8530. A 1.0 bit time delay is acceptable. A 0.5 bit time delay is preferable. The received signals on the PAL's TXD and TXC inputs are output by the PAL on DATA OUT and CLOCK OUT, respectively, for transferring these signals from the 8530 to the network. The signal received by the PAL on TXD is typically responsive to what the 8530 received via RX8530. For example, if the RX8530 data is not a token seized by the 8530, the data the 8530 outputs to TXD is the same as what it received via RX8530. If the RX8530 signal is a token that is seized by the 8530, then the data output to TXD is that which the 8530 wants to transmit to the network in response to the seized token. As shown in FIG. 6, this process continues in a looping manner until FRMSET goes high.

30 Data on the network is framed with an opening flag and a closing flag (back to back frames with shared flags are not permitted in the protocol of the above-described Zeta system so that the PAL 16 can recognize line status). A station can transmit when its interface receives the token (mark idle following the closing flag of a message) or an abort signal (mark idle during the reception of a message). When one of these conditions

35

-18-

occurs and there is data to send, the 8530 converts the token to a flag and goes into flag idle until the station starts sending data. At this point, the token has been seized.

5 When the 8530 starts sending data, it asserts FRMSET. When FRMSET goes high (is asserted), the PAL continues to receive signals from the network via RXD and /RXC; but instead of forwarding the RXD data to the 8530, the PAL sends a predetermined signal to the 8530 to
10 emulate to the 8530 master-slave operation during transmission by the 8530. In the preferred embodiment, the PAL holds RX8530 at mark idle (logical one). This holds the token. The PAL continues to receive over TXD (and TXC as well) and transmit over DATA OUT (and CLOCK
15 OUT as well). FRMSET should remain asserted until the last few bytes of the message, preferably the CRC. When the last byte is sent in the preferred embodiment, FRMSET is released. This causes the PAL to start searching the
20 RXD data from the network for its termination condition.

 When FRMSET goes low, the PAL continues to assert mark idle on RX8530 until either of two terminating conditions is detected via its RXD. The continued marking idle is important because the falling edge of
25 FRMSET is asynchronous. Furthermore, when the closing flag of a frame is received from RXD, it may be followed by more flags. The timing of the flag sent over RX8530 and the reversion of RX8530 to follow RXD must be such that the flag sent by RX8530 is immediately followed by the flags on RXD; therefore, it is not permissible to
30 introduce or delete a bit at this transition. The two terminating conditions include:

 a) non-flag data followed by a flag coming in on RXD (presumably the closing flag of the just transmitted frame)(a flag can be recognized
35 simply by detecting six consecutive ones; non-flag data can be recognized either by three or

-19-

more consecutive 0's or by a 0 followed by five or fewer 1's); or

- b) a token (an abort is recognized as a token, which is a 0 followed by seven 1's).

5 When either of these terminating patterns is recognized by the PAL, then a flag character (binary 01111110) is sent to the 8530 over RX8530. Then RX8530 reverts to following RXD and the primary "listen" mode loop shown in FIG. 6.

10 Signals S0 and S1 are used for verifying status of the PAL and for testing.

The foregoing operation can be specifically implemented using the interface shown in FIG. 5 and the PAL program at the end of this specification.

15 It is to be noted also that the invention can be implemented in other embodiments and implementations. For example, the adapter 16 can be implemented by any means which provides the necessary function, specifically the peer-to-peer/master-slave interface of the preferred
20 embodiment. Such alternative implementations can be hardware or software based (or both) and can include, for example, discrete or integrated circuit logic devices or circuits (of which a programmable logic device is only one type) or a programmed microprocessor.

25 Thus, the present invention is well adapted to carry out the objects and attain the ends and advantages mentioned above as well as those inherent therein. While a preferred embodiment of the invention has been described for the purpose of this disclosure, changes in
30 the construction and arrangement of parts and the performance of steps can be made by those skilled in the art, which changes are encompassed within the spirit of this invention as defined by the appended claims.

```

;----- PIN Declarations -----
PIN 1 /rxc ; INPUT
PIN 2 rxd ; INPUT
PIN 3 fmsset ; INPUT
PIN 4 txc COMBINATORIAL ; INPUT
PIN 5 txd COMBINATORIAL ; INPUT
PIN 6 /reset ; INPUT
PIN 14 txcout COMBINATORIAL ; OUTPUT
PIN 15 cntones REGISTERED ; OUTPUT
PIN 19 s1 REGISTERED ; OUTPUT
PIN 17 s0 REGISTERED ; OUTPUT
PIN 18 rx8530 COMBINATORIAL ; OUTPUT
PIN 16 c2 REGISTERED ; OUTPUT
PIN 21 c1 REGISTERED ; OUTPUT
PIN 20 txdout COMBINATORIAL ; OUTPUT

```

```

PIN 22          c0          REGISTERED ; OUTPUT
PIN 23          flgout     REGISTERED ; OUTPUT

```

```

; ----- Boolean Equation Segment -----
STRING NEUTRAL      '/S1 * /S0'
STRING SEEKING_0    ' S1 * S0'
STRING SEEKING_DATA '/S1 * S0'
STRING SEEKING_FLAG ' S1 * /S0'
STRING COUNT_0      '/C2 * /C1 * /C0'
STRING COUNT_1      '/C2 * /C1 * C0'
STRING COUNT_2      '/C2 * C1 * /C0'
STRING COUNT_3      '/C2 * C1 * C0'
STRING COUNT_4      ' C2 * /C1 * /C0'
STRING COUNT_5      ' C2 * /C1 * C0'
STRING COUNT_6      ' C2 * C1 * /C0'
STRING COUNT_7      ' C2 * C1 * C0'

```

EQUATIONS

```

s0.trst=vcc
s1.trst=vcc
c0.trst=vcc
c1.trst=vcc
c2.trst=vcc
txdout.trst=vcc

```

```

cntones.trst=vcc
rx8530.trst=vcc
flgout.trst=vcc
txcout.trst=vcc

flgout := /fmset * flgout * /(COUNT_7) * /reset
+ /fmset * SEEKING_FLAG * COUNT_5 * cntones * /reset
+ /fmset * SEEKING_DATA * COUNT_6 * cntones * /reset

/c0 := c0 ; Carry

+ /flgout * cntones * /rxd ; Reset to start counting 0's
+ /flgout * /cntones * rxd ; Reset to start counting 1's

; Reset to start sending the flag
+ /flgout * SEEKING_FLAG * COUNT_5 * cntones
+ /flgout * SEEKING_DATA * COUNT_6 * cntones

; Reset when entering the SEEKING_DATA state
+ /flgout * SEEKING_0 * /rxd

; Hold count at 0 if receiving a 0 at beginning of flag
+ flgout * COUNT_0 * /rxd
;Reset counter
+ reset

/c1 := c1 * c0 ; Carry out

```



```

+ /c1 * /c0          ; No carry in
+ /flgout * cntones * /rxld      ; Reset to start counting 0's
+ /flgout * /cntones * rxld      ; Reset to start counting 1's
; Reset to start sending the flag
+ /flgout * SEEKING_FLAG * COUNT_5 * cntones
+ /flgout * SEEKING_DATA * COUNT_6 * cntones
; Reset when entering the SEEKING_DATA state
+ /flgout * SEEKING_0 * /rxld
; Reset counter
+ reset
/c2 := COUNT_7          ; Carry out
+ COUNT_0              ; No carry in
+ COUNT_1
+ COUNT_2
+ /flgout * cntones * /rxld      ; Reset to start counting 0's
+ /flgout * /cntones * rxld      ; Reset to start counting 1's
; Reset to start sending the flag
+ /flgout * SEEKING_FLAG * COUNT_5 * cntones
+ /flgout * SEEKING_DATA * COUNT_6 * cntones
; Reset when entering the SEEKING_DATA state

```

```

+ /flgout * SEEKING_0 * /rxd
; Reset counter
+ reset

cntones := rxd * /reset

/s0 := NEUTRAL * /fmset           ; Maintain NEUTRAL
+ SEEKING_FLAG                   ; Maintain SEEKING_FLAG

; Transit from SEEKING_DATA to SEEKING_FLAG
+ SEEKING_DATA * cntones * /rxd * COUNT_0
+ SEEKING_DATA * cntones * /rxd * COUNT_1
+ SEEKING_DATA * cntones * /rxd * COUNT_2
+ SEEKING_DATA * cntones * /rxd * COUNT_3
+ SEEKING_DATA * cntones * /rxd * COUNT_4
+ SEEKING_DATA * /cntones * /rxd * COUNT_1

; Transit to SENDING_FLAG (and hence to NEUTRAL)
+ flgout
;Reset state machine
+ reset

s1 := /flgout * SEEKING_0 * rxd * /reset           ; Maintain SEEKING_0

; Maintain SEEKING_FLAG * /reset
+ /flgout * SEEKING_FLAG * /cntones * /reset
+ /flgout * SEEKING_FLAG * COUNT_0 * /reset

```

```

+ /flgout * SEEKING_FLAG * COUNT_1 * /reset
+ /flgout * SEEKING_FLAG * COUNT_2 * /reset
+ /flgout * SEEKING_FLAG * COUNT_3 * /reset
+ /flgout * SEEKING_FLAG * COUNT_4 * /reset
+ /flgout * SEEKING_FLAG * COUNT_5 * /reset

; Transit to SEEKING_0
+ fmset * /reset

; Transit to SEEKING_FLAG
+ /flgout * SEEKING_DATA * cntones * /rxd * COUNT_0 * /reset
+ /flgout * SEEKING_DATA * cntones * /rxd * COUNT_1 * /reset
+ /flgout * SEEKING_DATA * cntones * /rxd * COUNT_2 * /reset
+ /flgout * SEEKING_DATA * cntones * /rxd * COUNT_3 * /reset
+ /flgout * SEEKING_DATA * cntones * /rxd * COUNT_4 * /reset
+ /flgout * SEEKING_DATA * /cntones * /rxd * COUNT_1 * /reset

rx8530 = cntones * /flgout * NEUTRAL ; Pass data straight through

; Send a flag
+ flgout * COUNT_1
+ flgout * COUNT_2
+ flgout * COUNT_3
+ flgout * COUNT_4
+ flgout * COUNT_5
+ flgout * COUNT_6

```

```
; Send continuous 1's  
+ /flgout * SEEKING_0  
+ /flgout * SEEKING_DATA  
+ /flgout * SEEKING_FLAG
```

```
; Buffer the clocks out  
txcout = txc  
txdout = txd
```

```
;----- Simulation Segment -----  
SIMULATION  
;
```

-27-

What is claimed is:

1. A communications network interface adapter, comprising:

5 means, adapted to be connected to a communications network and to a serial communications controller at a node of the communications network, for transferring network data to the serial communications controller during a receive mode of operation; and

10 means, adapted to be connected to the communications network and to the serial communications controller at the node of the communications network, for sending predetermined signals instead of network data to the serial communications controller during a transmit mode of operation.

20 2. A communications network interface adapter as defined in claim 1, wherein the communications network is a peer-to-peer token ring network and wherein the serial communications controller operates in a master-slave mode.

25 3. A communications network interface adapter as defined in claim 2, further comprising a programmable logic device programmed to define both said means.

4. An interface for a token ring network, comprising:

30 a serial communications controller having a master-slave mode of operation; and

35 a programmable logic device connected to said serial communications controller for adapting said serial communications controller to operate on a peer-to-peer token ring network when said serial communications controller operates in said master-slave mode, said programmable logic

-28-

5 device having both a receive mode of
operation, wherein a signal received by
said programmable logic device from a
connected token ring network is
transferred to said serial communications
controller and further wherein a signal
received by said programmable logic device
from said serial communications controller
is transmitted onto the connected network,
10 and a transmit mode of operation, wherein
a predetermined signal is sent to said
serial communications controller from said
programmable logic device in place of a
signal received by said programmable logic
15 device from the connected network and
further wherein a signal received by said
programmable logic device from said serial
communications controller is transmitted
onto the connected network.

20 5. An interface as defined in claim 4, wherein:
said interface further comprises an opto-
coupler having respective inputs for
connecting to a network data input line
and a network clock input line and further
25 having a first output connected to said
serial communications controller and said
programmable logic device for
communicating a network clock signal
thereto and still further having a second
30 output connected to said programmable
logic device for communicating a network
data signal thereto; and
said programmable logic device has a first
output for connecting to a network data
35 output line and a second output for
connecting to a network clock output line.

-29-

6. A method of communicating a station in a peer-to-peer mode on a token ring network, comprising:

(a) receiving a signal from a token ring network;

5 (b) transferring the received signal to a serial communications controller operating in a master-slave mode;

(c) receiving a responsive signal from the serial communications controller;

10 (d) transmitting the responsive signal onto the token ring network; and

repeating steps (a) through (d) until a predetermined token defined by a plurality of signals on the network is seized by the serial communications controller, then performing the following steps until the token is passed on by the serial communications controller:

15 receiving a signal from the token ring network;

20 sending a predetermined signal to the serial communications controller to emulate to the serial communications controller master-slave operation during transmission by the serial communication controller;

25 receiving a signal from the serial communications controller; and

30 transmitting the signal received from the serial communications controller onto the token ring network.

7. A method as defined in claim 6, wherein the signals of steps (a) and (c) are received by a programmable logic device.

35 8. A method as defined in claim 6, wherein the predetermined signal represents logic 1.

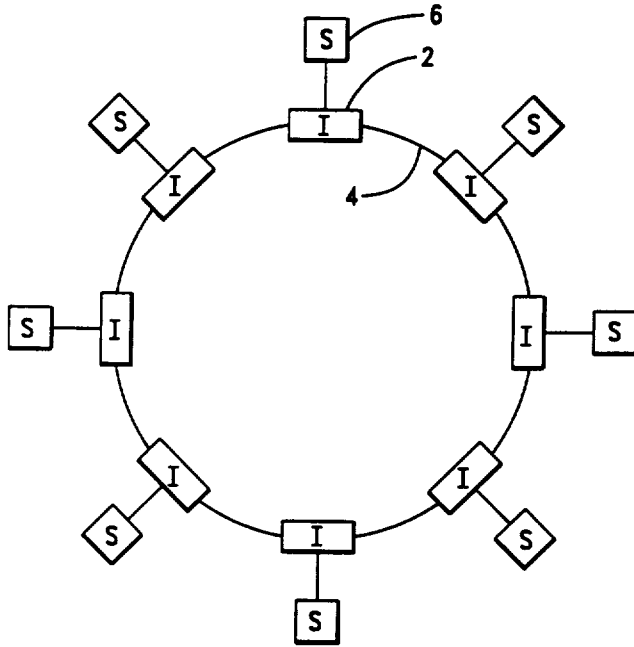


FIG. 1

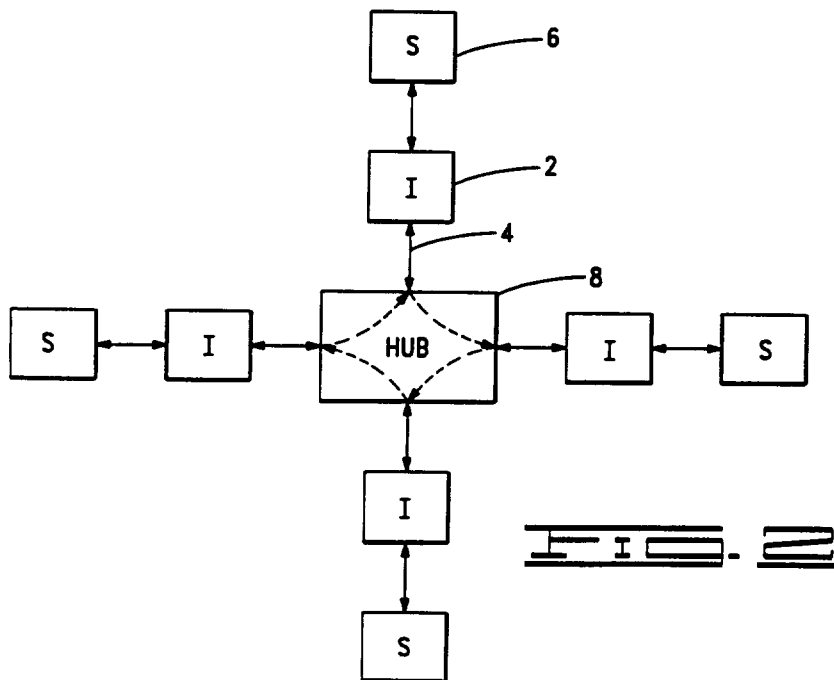


FIG. 2

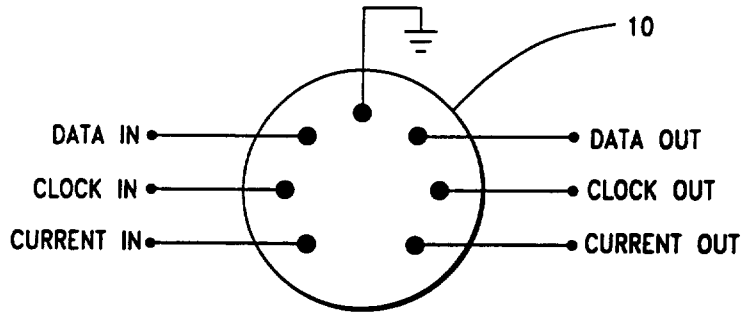


FIG. 3

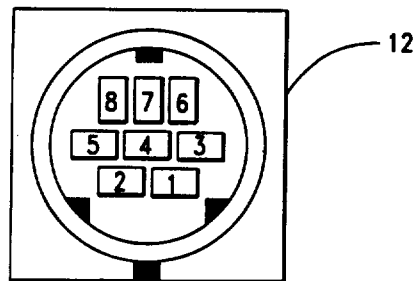


FIG. 4

3/4

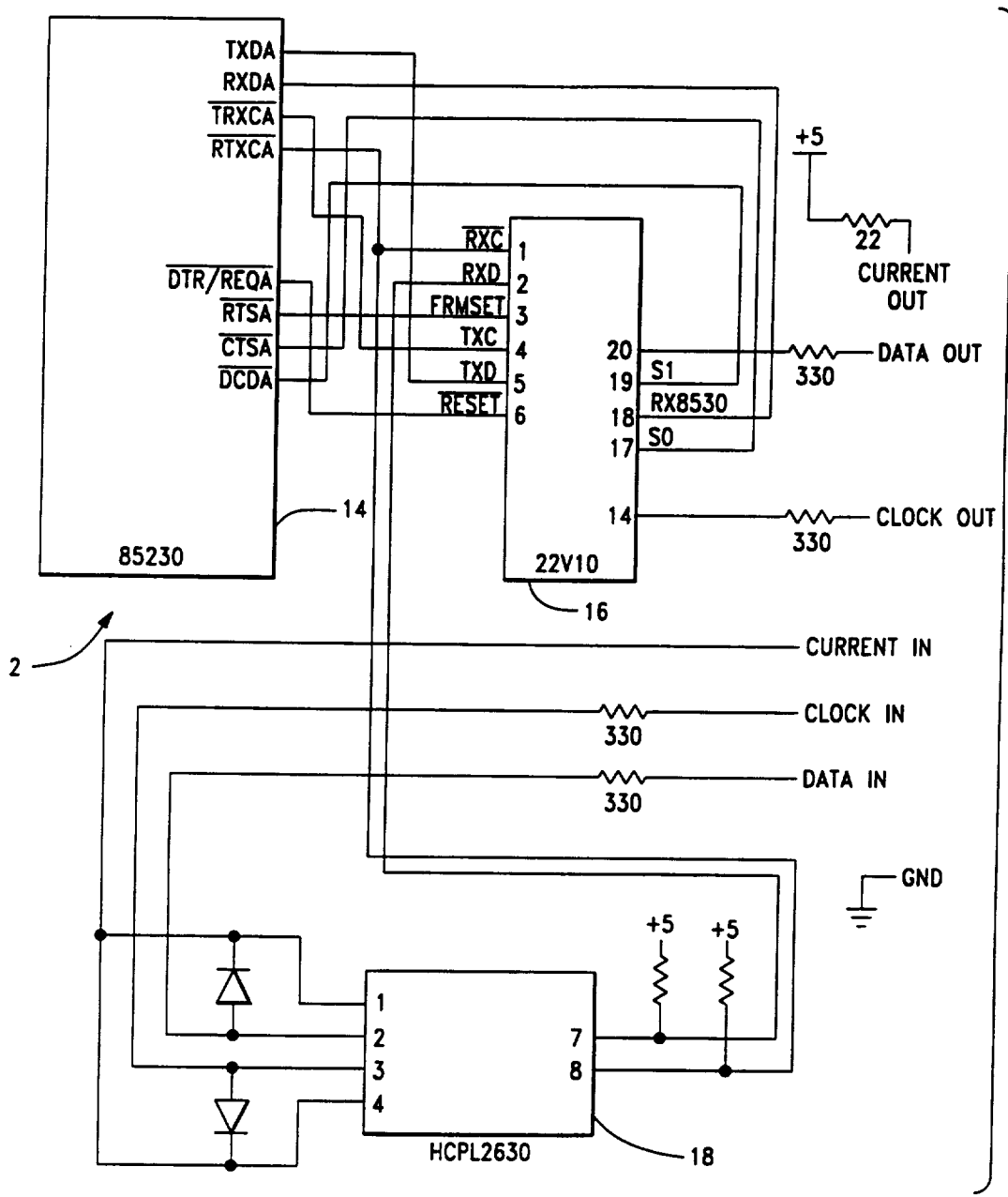


FIG. 5

4/4

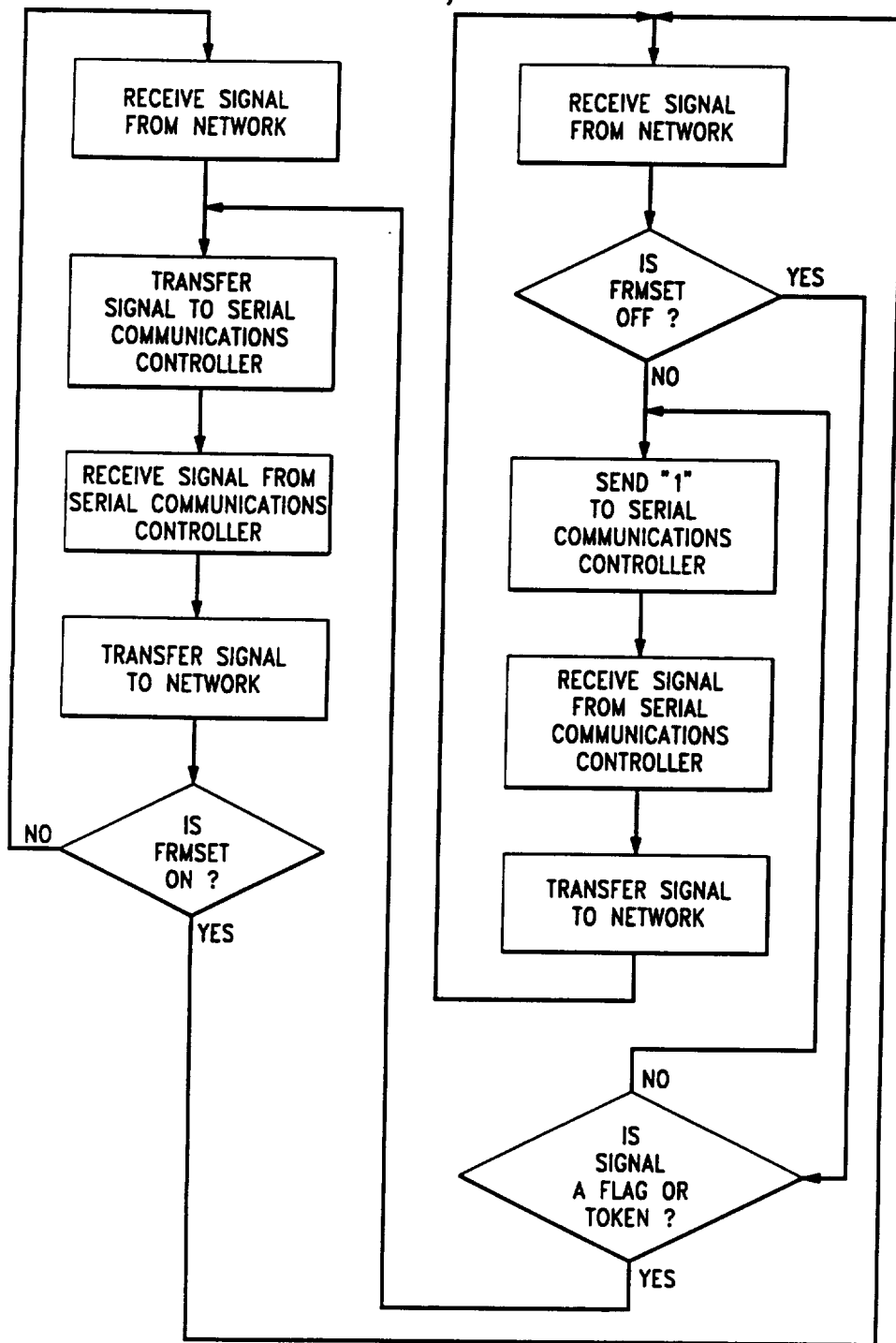


FIG. 3

INTERNATIONAL SEARCH REPORT

International application No.
PCT/US96/00207

A. CLASSIFICATION OF SUBJECT MATTER

IPC(6) :H04L 5/22
US CL :Please See Extra Sheet.

According to International Patent Classification (IPC) or to both national classification and IPC

B. FIELDS SEARCHED

Minimum documentation searched (classification system followed by classification symbols)

U.S. : 370/85.1, 85.4, 85.5, 85.9, 85.11, 85.12, 85.15; 340/825.05, 825.5

Documentation searched other than minimum documentation to the extent that such documents are included in the fields searched

Electronic data base consulted during the international search (name of data base and, where practicable, search terms used)

C. DOCUMENTS CONSIDERED TO BE RELEVANT

Category*	Citation of document, with indication, where appropriate, of the relevant passages	Relevant to claim No.
A	US, A, 4,566,097 (BEDERMAN) 21 January 1986.	1-8
A	US, A, 4,736,368 (SZCZEPANEK) 05 April 1988.	1-8
A	US, A, 4,819,229 (PRITTY ET AL) 04 April 1989.	1-8
A	US, A, 5,274,637 (SAKAMURA ET AL) 28 December 1993.	1-8

Further documents are listed in the continuation of Box C. See patent family annex.

* Special categories of cited documents:	*T	later document published after the international filing date or priority date and not in conflict with the application but cited to understand the principle or theory underlying the invention
*A		document defining the general state of the art which is not considered to be part of particular relevance
*E		earlier document published on or after the international filing date
*L		document which may throw doubts on priority claim(s) or which is cited to establish the publication date of another citation or other special reason (as specified)
*O		document referring to an oral disclosure, use, exhibition or other means
*P		document published prior to the international filing date but later than the priority date claimed
	*X	document of particular relevance; the claimed invention cannot be considered novel or cannot be considered to involve an inventive step when the document is taken alone
	*Y	document of particular relevance; the claimed invention cannot be considered to involve an inventive step when the document is combined with one or more other such documents, such combination being obvious to a person skilled in the art
	*&	document member of the same patent family

Date of the actual completion of the international search

21 MARCH 1996

Date of mailing of the international search report

02 APR 1996

Name and mailing address of the ISA/US
Commissioner of Patents and Trademarks
Box PCT
Washington, D.C. 20231

Facsimile No. (703) 305-3230

Authorized officer

MELVIN MARCELO

Telephone No. (703) 305-4700

INTERNATIONAL SEARCH REPORT

International application No.

PCT/US96/00207

A. CLASSIFICATION OF SUBJECT MATTER:

US CL :

370/85.1, 85.4, 85.5, 85.9, 85.11, 85.12, 85.15; 340/825.05, 825.5